

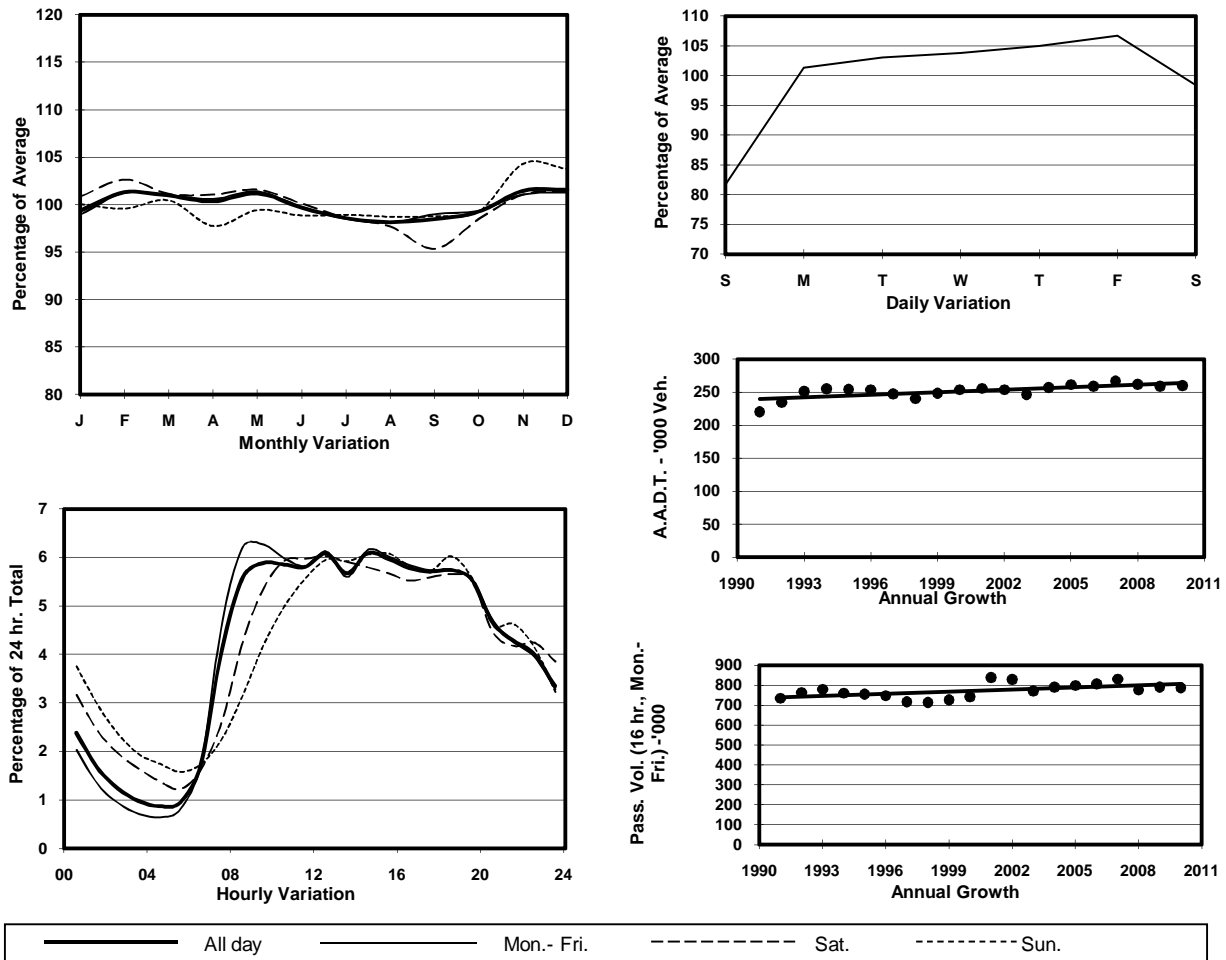
YEAR 2010

Location Screenline F-F(East end of Central District and the Peak)

Stations on Cordon/Screenline

1001, 1007, 2203 and 2213

## 1. TRAFFIC FLOW VARIATION AND GROWTH



## 2. TRAFFIC CHARACTERISTICS (BY DIRECTION)

Parameter	All - Day	Mon. - Fri.	Sat.	Sun.
<b>EAST BOUND</b>				
A.A.D.T.	127980	133860	127460	107680
R 12 / 24 - %	67.6	69.4	63.5	61.1
R 16 / 24 - %	86.1	87.9	81.7	79.6
AM Peak Hour	0900-1000	0900-1000	0900-1000	0900-1000
One-way flow at AM peak hour	7480	8330	6810	4380
T - % (AM)	-	11.8	-	-
PM Peak Hour	1600-1700	1600-1700	1800-1900	1800-1900
One-way flow at PM peak hour	7370	7780	7030	6430
T - % (PM)	-	10.3	-	-
Prop.of commercial vehicles - 16 hr.	-	10	-	-
<b>WEST BOUND</b>				
A.A.D.T.	131980	139080	130700	106660
R 12 / 24 - %	69	70.7	65.2	62.5
R 16 / 24 - %	87.5	89.1	83.7	81.8
AM Peak Hour	0900-1000	0900-1000	0900-1000	0900-1000
One-way flow at AM peak hour	7840	8740	7060	4640
T - % (AM)	-	11	-	-
PM Peak Hour	1800-1900	1700-1800	1700-1800	1800-1900
One-way flow at PM peak hour	7850	8310	7590	6480
T - % (PM)	-	9.5	-	-
Prop.of commercial vehicles - 16 hr.	-	9.6	-	-

## 3. OTHER INFORMATION AND COMMENT

**4. Vehicle classification and occupancy - Monday to Friday**

Time		Class of vehicle									
		Motor	Private	Taxi	Private	PLB	Goods veh.		Non	Fr. Bus	
		Cycle	Car		LB		Light	M & H	Fr. Bus	SD	DD
0700-0800	Pro	2.8	23.5	45.5	2.5	2.6	8.9	1.9	5.5	0.2	6.7
	Ocp	1.0	1.5	1.8	6.5	10.1	1.6	1.5	13.5	17.5	29.7
0800-0900	Pro	2.4	41.4	34.6	0.9	1.9	5.9	1.7	4.9	0.2	6.2
	Ocp	1.1	1.4	1.9	5.4	10.0	1.6	1.3	16.3	17.4	34.3
0900-1000 Peak Hour	Pro	1.8	33.8	37.4	0.6	1.4	13.6	2.7	2.9	0.1	5.7
	Ocp	1.0	1.4	1.9	2.8	8.5	1.7	1.4	12.3	13.0	21.1
1000-1100	Pro	1.7	33.3	36.0	0.5	1.5	17.0	2.7	2.1	0.2	5.0
	Ocp	1.0	1.4	1.7	1.6	5.0	1.6	1.4	10.4	7.1	18.4
1100-1200	Pro	1.9	36.0	34.1	1.3	1.0	17.0	2.1	2.3	0.1	4.1
	Ocp	1.1	1.4	1.7	2.3	8.2	1.6	1.3	10.4	7.5	18.6
1200-1300	Pro	1.8	36.4	37.5	1.3	1.1	13.7	2.2	2.4	0.1	3.7
	Ocp	1.0	1.4	2.2	4.6	9.5	1.6	1.4	11.9	6.2	18.3
1300-1400	Pro	1.9	35.1	36.6	0.7	1.1	14.8	3.0	2.6	0.2	3.9
	Ocp	1.1	1.4	2.0	4.0	7.9	1.5	1.4	12.0	11.7	19.4
1400-1500	Pro	2.0	34.8	35.9	1.0	1.0	15.1	3.5	2.7	0.2	3.8
	Ocp	1.1	1.5	2.2	2.3	8.7	1.6	1.3	12.3	6.3	20.9
1500-1600	Pro	2.3	38.6	32.1	1.7	1.1	14.3	3.1	2.6	0.1	4.1
	Ocp	1.1	1.5	2.1	5.6	9.8	1.6	1.3	13.1	8.4	21.2
1600-1700	Pro	2.5	40.9	31.6	1.2	1.0	13.3	2.1	2.4	0.1	4.9
	Ocp	1.2	1.5	2.1	3.4	10.6	1.7	1.3	8.9	9.1	20.7
1700-1800	Pro	2.5	39.6	36.6	0.9	1.1	9.4	1.2	3.1	0.1	5.4
	Ocp	1.1	1.5	2.0	3.1	11.1	1.5	1.3	11.5	17.4	27.2
1800-1900	Pro	3.2	43.8	36.7	0.5	1.3	4.8	0.4	3.9	0.1	5.3
	Ocp	1.1	1.5	2.2	5.0	12.5	1.7	1.8	15.5	19.2	37.6
1900-2000	Pro	2.3	45.0	39.9	0.2	1.3	2.7	0.4	2.9	0.1	5.2
	Ocp	1.1	1.4	2.0	2.2	12.5	1.4	1.3	17.3	9.4	26.8
2000-2100	Pro	2.1	33.7	52.2	0.3	1.3	2.5	0.5	1.7	0.2	5.4
	Ocp	1.1	1.6	2.0	2.7	11.1	1.5	1.7	15.5	8.3	20.3
2100-2200	Pro	2.4	31.4	54.8	0.3	1.2	2.9	0.5	1.0	0.2	5.3
	Ocp	1.2	1.5	2.0	1.4	7.8	1.6	1.5	10.3	8.3	19.8
2200-2300	Pro	2.4	31.8	55.3	0.1	1.5	1.7	0.5	0.8	0.2	5.8
	Ocp	1.1	1.5	2.0	2.3	10.2	1.6	1.1	8.7	8.4	18.6
16 hours	Pro	2.2	36.5	38.9	0.9	1.3	10.3	1.9	2.8	0.1	5.0
	Ocp	1.1	1.5	2.0	4.1	9.6	1.6	1.4	13.1	11.0	24.0

**Legend**

- Pro.** Proportion of vehicles in % (Sum may not add up to 100% due to figure rounding)
- Ocp.** Average occupancy of vehicles
- M & H** Medium and Heavy